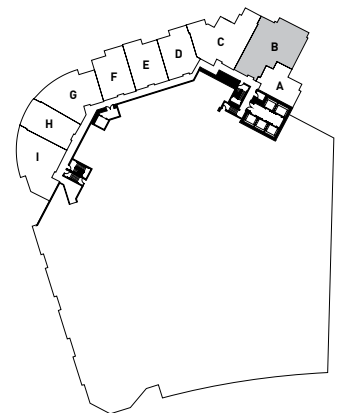


BISCAYNE BAY



**LOFT B**

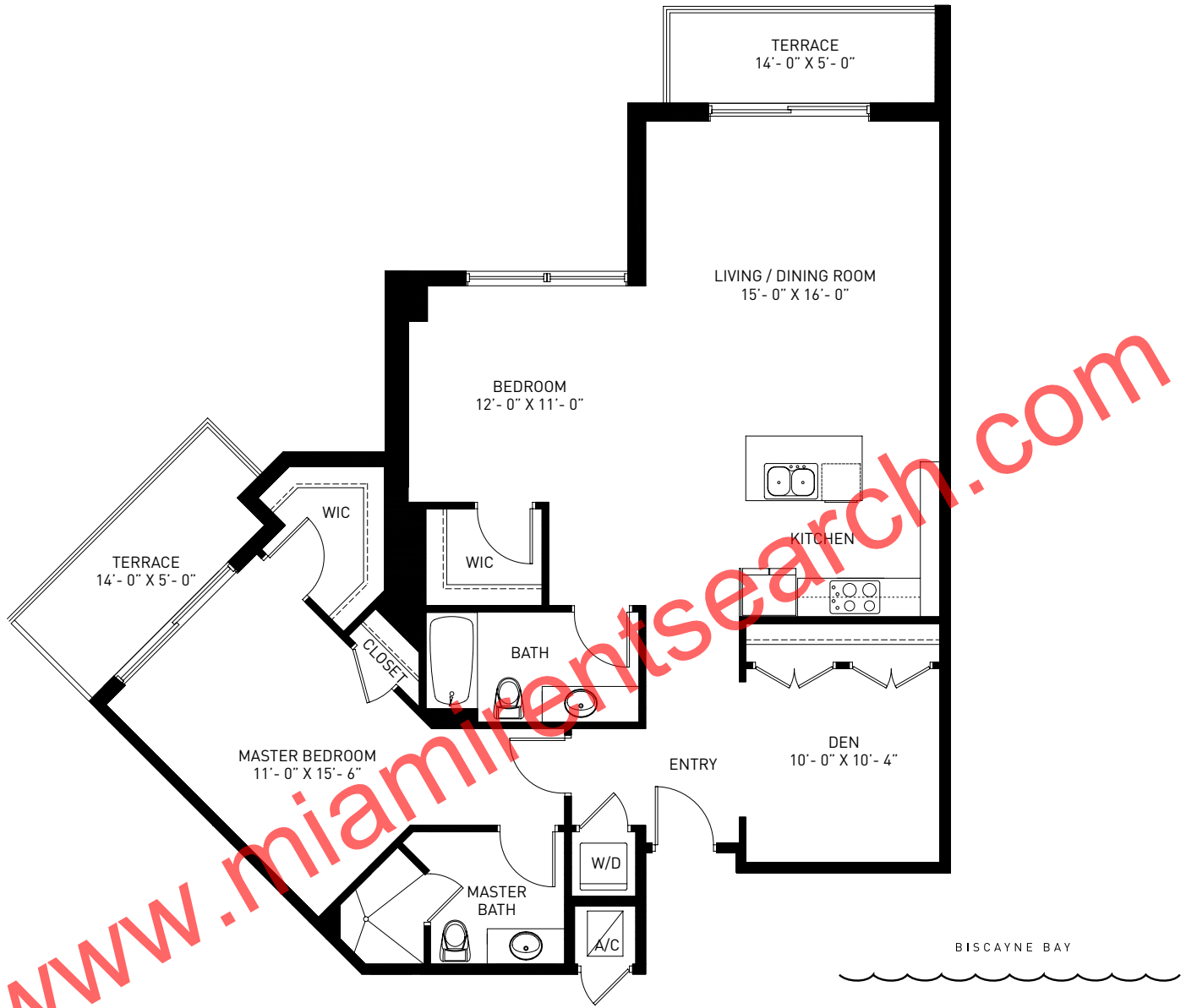
2 BEDROOM • 2.5 BATH • DEN • TERRACE

Unit Area: 1377 sq ft 127.92 m<sup>2</sup>

Terrace: 207 sq ft 19.23 m<sup>2</sup>

**TOTAL AREA: 1584 sq ft 147.15 m<sup>2</sup>**

All dimensions are approximate and all floor plans and development plans are subject to change by the developer without notice. Stated dimensions are measured to the exterior boundaries of the exterior walls and the centerline of interior demising walls and in fact vary from the dimensions that would be determined by using the description and definition of the "Unit" set forth in the Declaration (which generally only includes the interior airspace between the perimeter walls and excludes interior structural components).



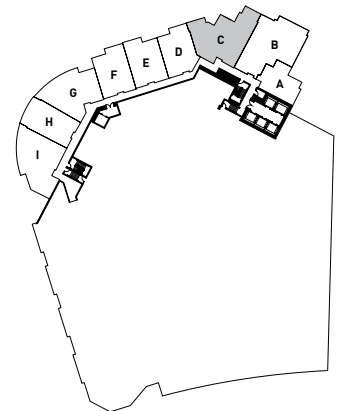
**LOFT C**

2 BEDROOM • 2 BATH • DEN • TERRACE

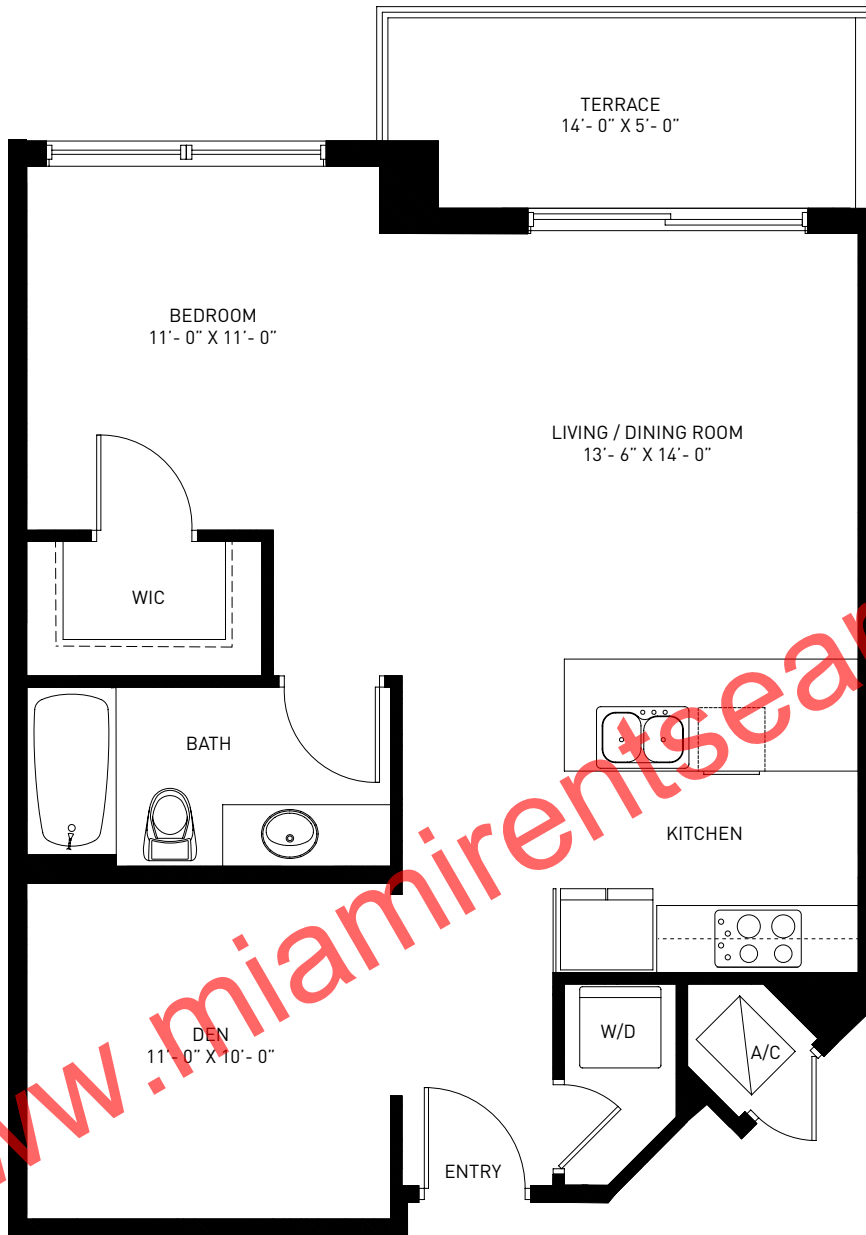
Unit Area: 1332 sq ft 123.74 m<sup>2</sup>

Terrace: 140 sq ft 13.00 m<sup>2</sup>

**TOTAL AREA: 1472 sq ft 136.74 m<sup>2</sup>**



All dimensions are approximate and all floor plans and development plans are subject to change by the developer without notice. Stated dimensions are measured to the exterior boundaries of the exterior walls and the centerline of interior demising walls and in fact vary from the dimensions that would be determined by using the description and definition of the "Unit" set forth in the Declaration (which generally only includes the interior airspace between the perimeter walls and excludes interior structural components).



BISCAYNE BAY

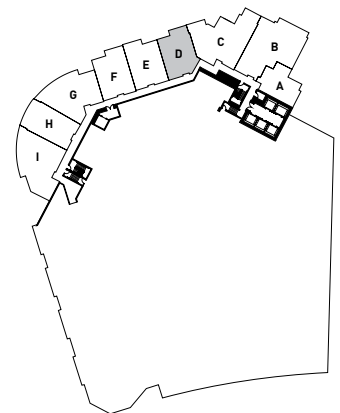
**LOFT D**

1 BEDROOM • 1 BATH • DEN • TERRACE

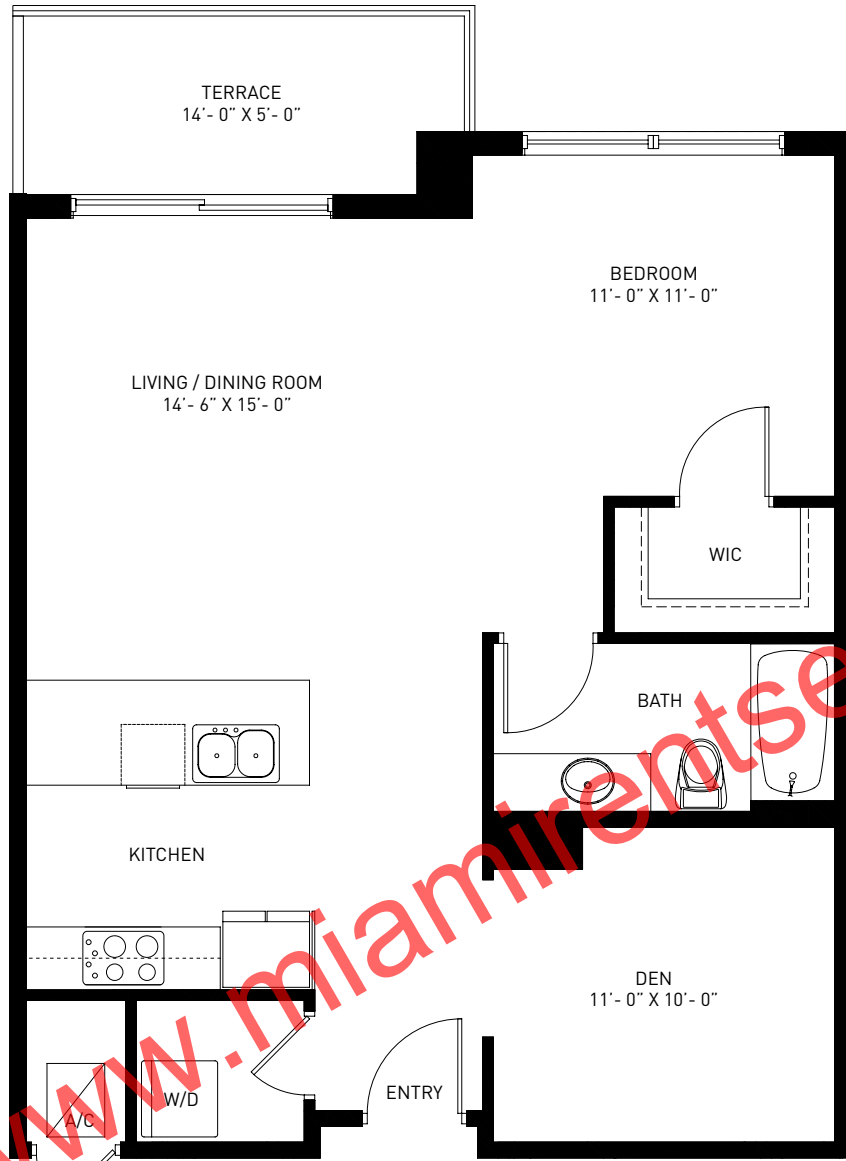
Unit Area: 763 sq ft 70.88 m<sup>2</sup>

Terrace: 70 sq ft 6.50 m<sup>2</sup>

**TOTAL AREA: 833 sq ft 77.38 m<sup>2</sup>**



All dimensions are approximate and all floor plans and development plans are subject to change by the developer without notice. Stated dimensions are measured to the exterior boundaries of the exterior walls and the centerline of interior demising walls and in fact vary from the dimensions that would be determined by using the description and definition of the "Unit" set forth in the Declaration (which generally only includes the interior airspace between the perimeter walls and excludes interior structural components).



www.miamirentsearch.com

BISCAYNE BAY

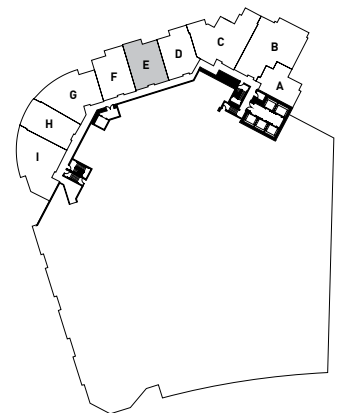
**LOFT E**

1 BEDROOM • 1 BATH • DEN • TERRACE

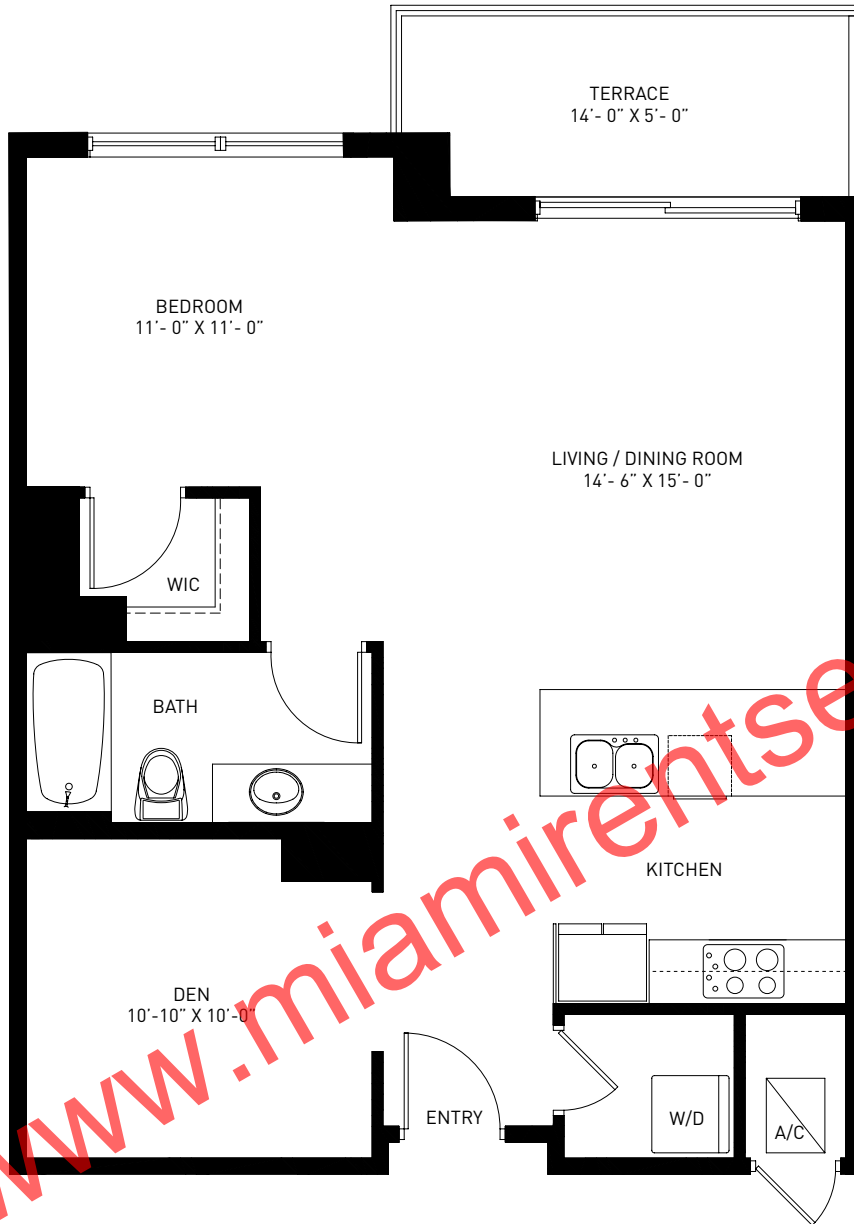
Unit Area: 811 sq ft 75.34 m<sup>2</sup>

Terrace: 70 sq ft 6.50 m<sup>2</sup>

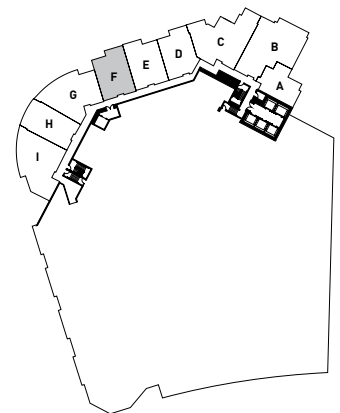
**TOTAL AREA: 881 sq ft 81.84 m<sup>2</sup>**



All dimensions are approximate and all floor plans and development plans are subject to change by the developer without notice. Stated dimensions are measured to the exterior boundaries of the exterior walls and the centerline of interior demising walls and in fact vary from the dimensions that would be determined by using the description and definition of the "Unit" set forth in the Declaration (which generally only includes the interior airspace between the perimeter walls and excludes interior structural components).



BISCAYNE BAY



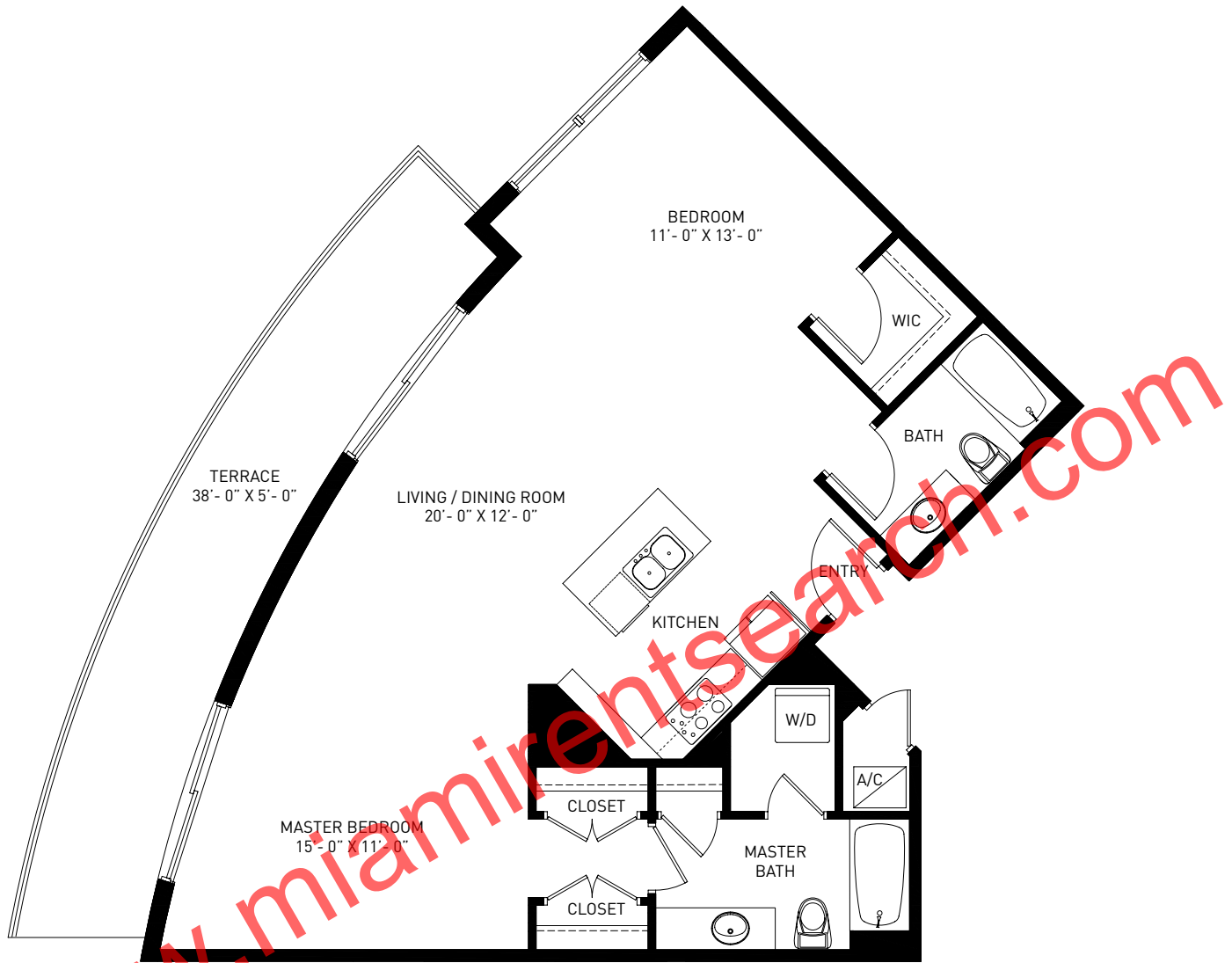
**LOFT F**

1 BEDROOM • 1 BATH • DEN • TERRACE

Unit Area: 816 sq ft 75.81 m<sup>2</sup>  
Terrace: 70 sq ft 6.50 m<sup>2</sup>

**TOTAL AREA: 886 sq ft 82.31 m<sup>2</sup>**

All dimensions are approximate and all floor plans and development plans are subject to change by the developer without notice. Stated dimensions are measured to the exterior boundaries of the exterior walls and the centerline of interior demising walls and in fact vary from the dimensions that would be determined by using the description and definition of the "Unit" set forth in the Declaration (which generally only includes the interior airspace between the perimeter walls and excludes interior structural components).



BISCAYNE BAY

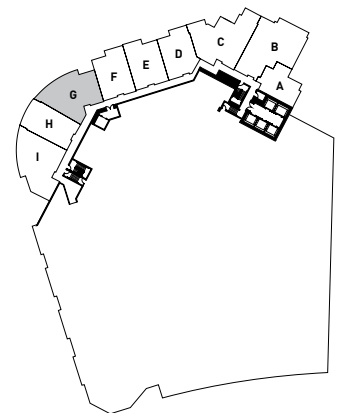
**LOFT G**

2 BEDROOM • 2 BATH • TERRACE

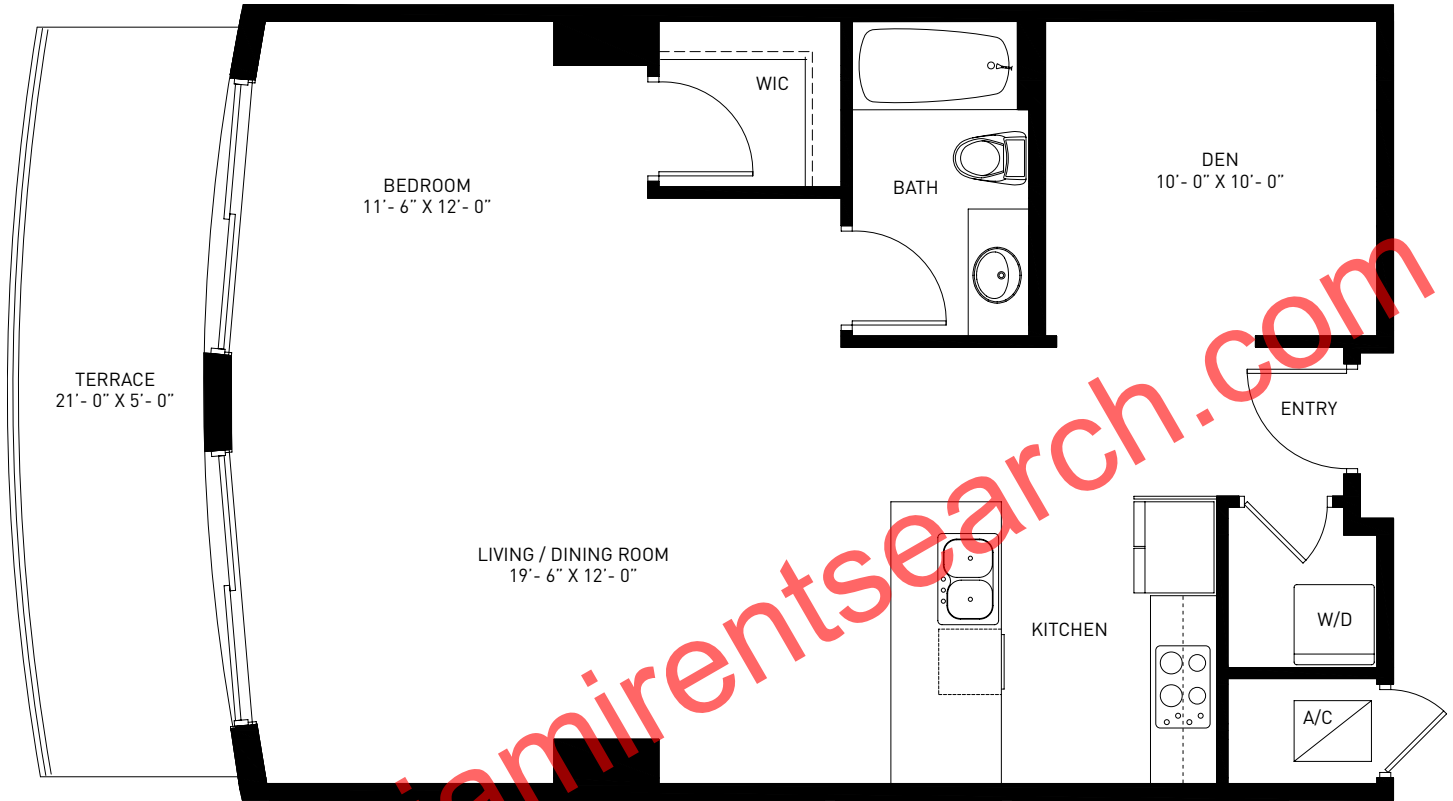
Unit Area: 1043 sq ft 96.89 m<sup>2</sup>

Terrace: 190 sq ft 17.65 m<sup>2</sup>

**TOTAL AREA: 1233 sq ft 114.54 m<sup>2</sup>**



All dimensions are approximate and all floor plans and development plans are subject to change by the developer without notice. Stated dimensions are measured to the exterior boundaries of the exterior walls and the centerline of interior demising walls and in fact vary from the dimensions that would be determined by using the description and definition of the "Unit" set forth in the Declaration (which generally only includes the interior airspace between the perimeter walls and excludes interior structural components).



www.miamirentsearch.com

BISCAYNE BAY

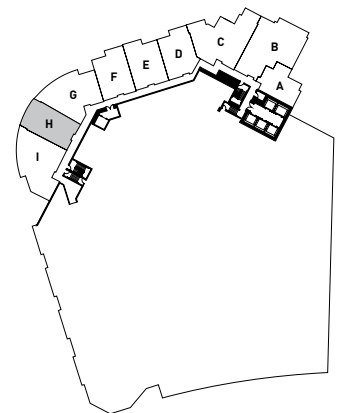
**LOFT H**

1 BEDROOM • 1 BATH • DEN • TERRACE

Unit Area: 829 sq ft 77.01 m<sup>2</sup>

Terrace: 105 sq ft 9.75 m<sup>2</sup>

**TOTAL AREA: 934 sq ft 86.76 m<sup>2</sup>**



All dimensions are approximate and all floor plans and development plans are subject to change by the developer without notice. Stated dimensions are measured to the exterior boundaries of the exterior walls and the centerline of interior demising walls and in fact vary from the dimensions that would be determined by using the description and definition of the "Unit" set forth in the Declaration (which generally only includes the interior airspace between the perimeter walls and excludes interior structural components).



www.miamirentsearch.com

BISCAYNE BAY

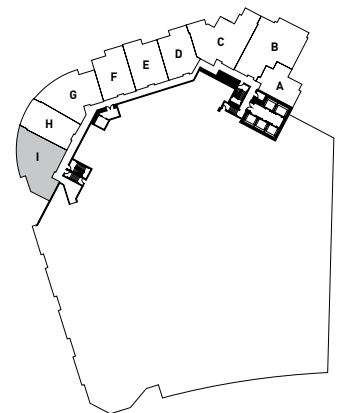
**LOFT I**

2 BEDROOM • 2 BATH • TERRACE

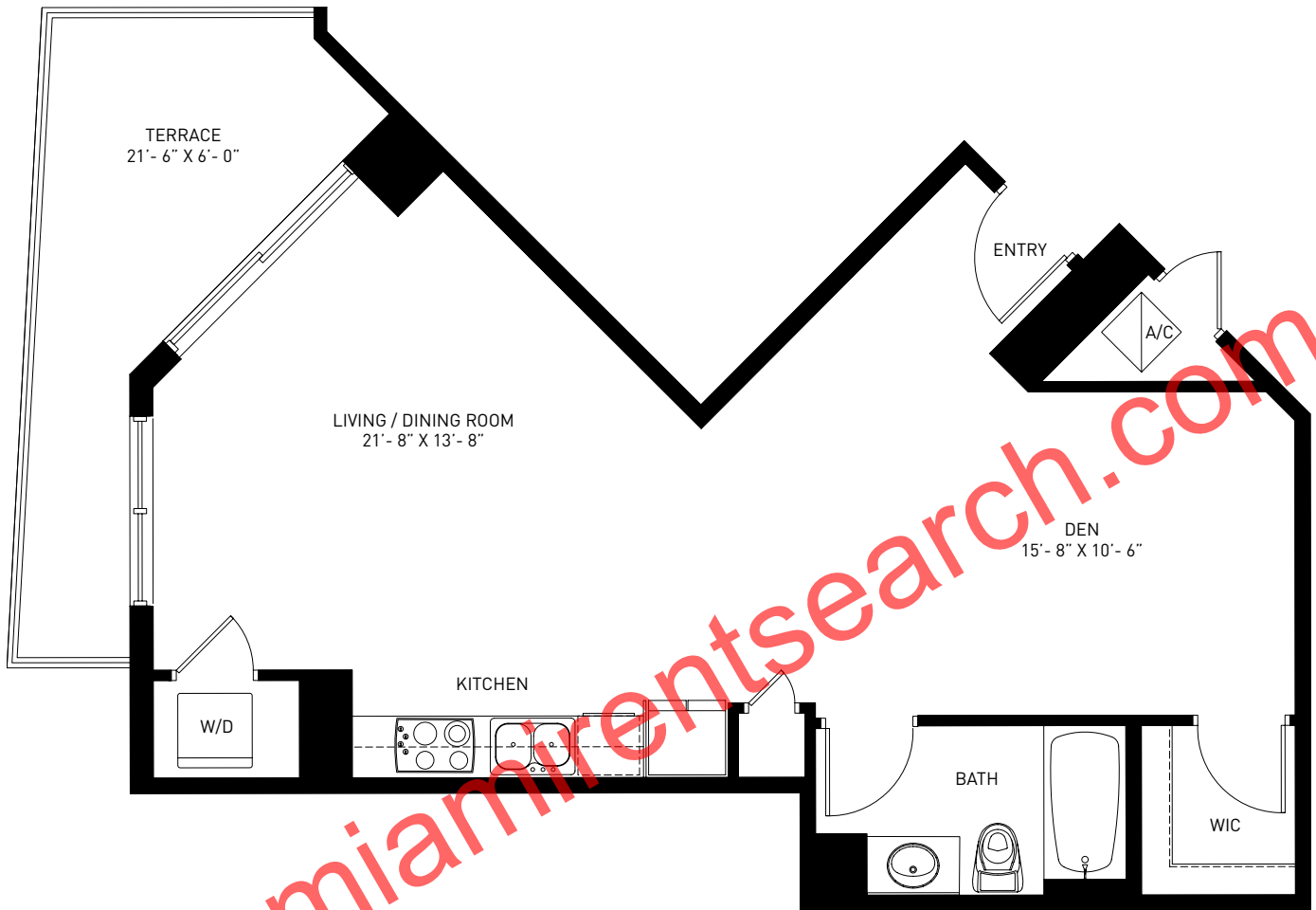
Unit Area: 1141 sq ft 105.99 m<sup>2</sup>

Terrace: 190 sq ft 17.65 m<sup>2</sup>

**TOTAL AREA: 1331 sq ft 123.64 m<sup>2</sup>**



All dimensions are approximate and all floor plans and development plans are subject to change by the developer without notice. Stated dimensions are measured to the exterior boundaries of the exterior walls and the centerline of interior demising walls and in fact vary from the dimensions that would be determined by using the description and definition of the "Unit" set forth in the Declaration (which generally only includes the interior airspace between the perimeter walls and excludes interior structural components).



BISCAYNE BAY

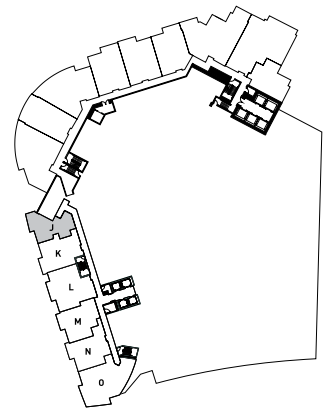
**LOFT J**

STUDIO • 1 BATH • DEN • TERRACE

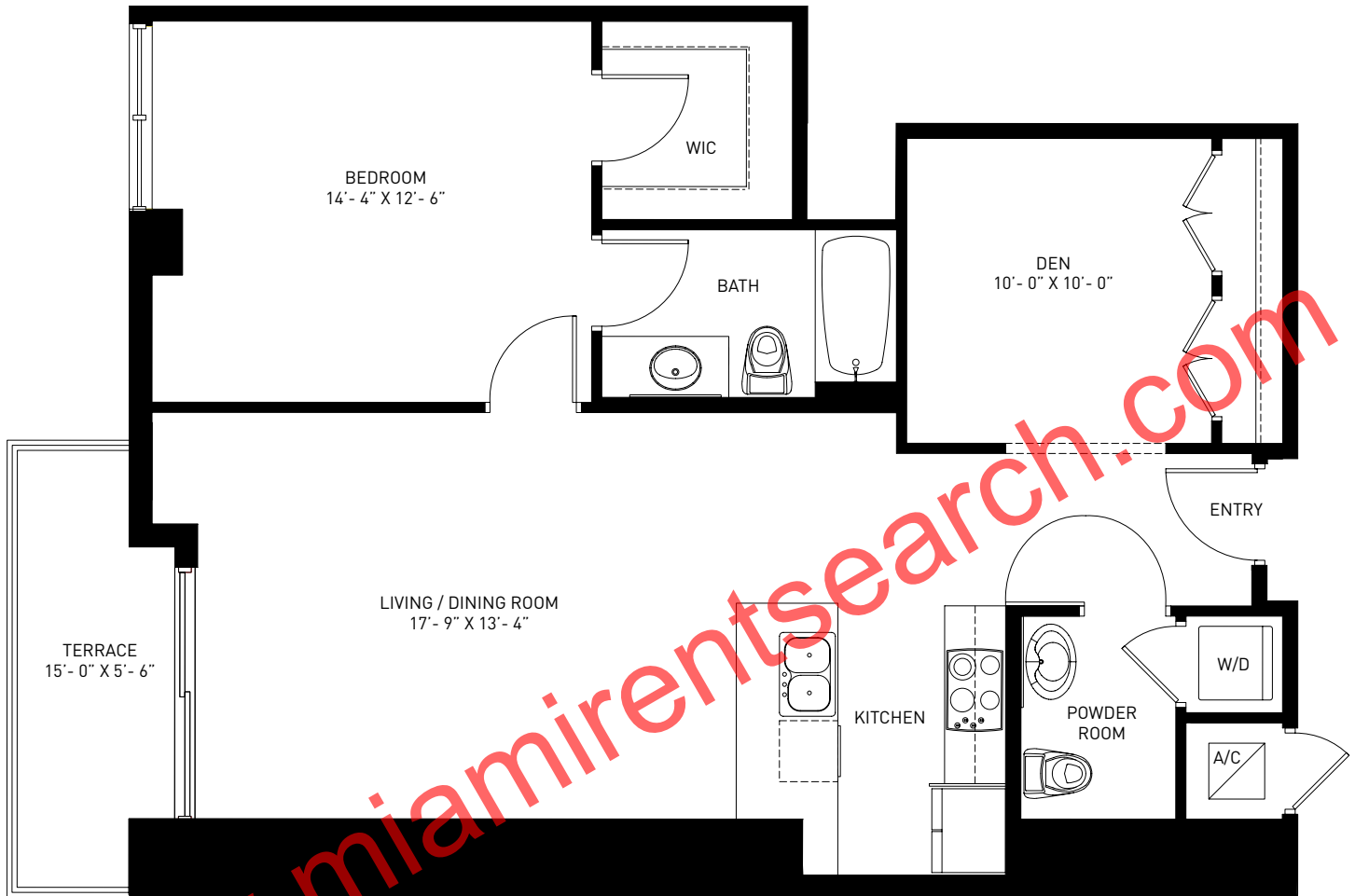
Unit Area: 696 sq ft 64.65 m<sup>2</sup>

Terrace: 133 sq ft 12.32 m<sup>2</sup>

**TOTAL AREA: 829 sq ft 79.96 m<sup>2</sup>**



All dimensions are approximate and all floor plans and development plans are subject to change by the developer without notice. Stated dimensions are measured to the exterior boundaries of the exterior walls and the centerline of interior demising walls and in fact vary from the dimensions that would be determined by using the description and definition of the "Unit" set forth in the Declaration (which generally only includes the interior airspace between the perimeter walls and excludes interior structural components).



www.miamirentsearch.com

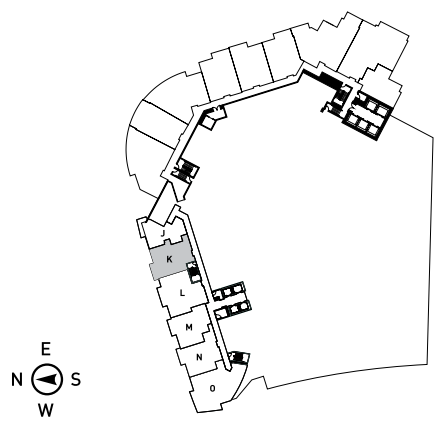
BISCAYNE BAY

**LOFT K**

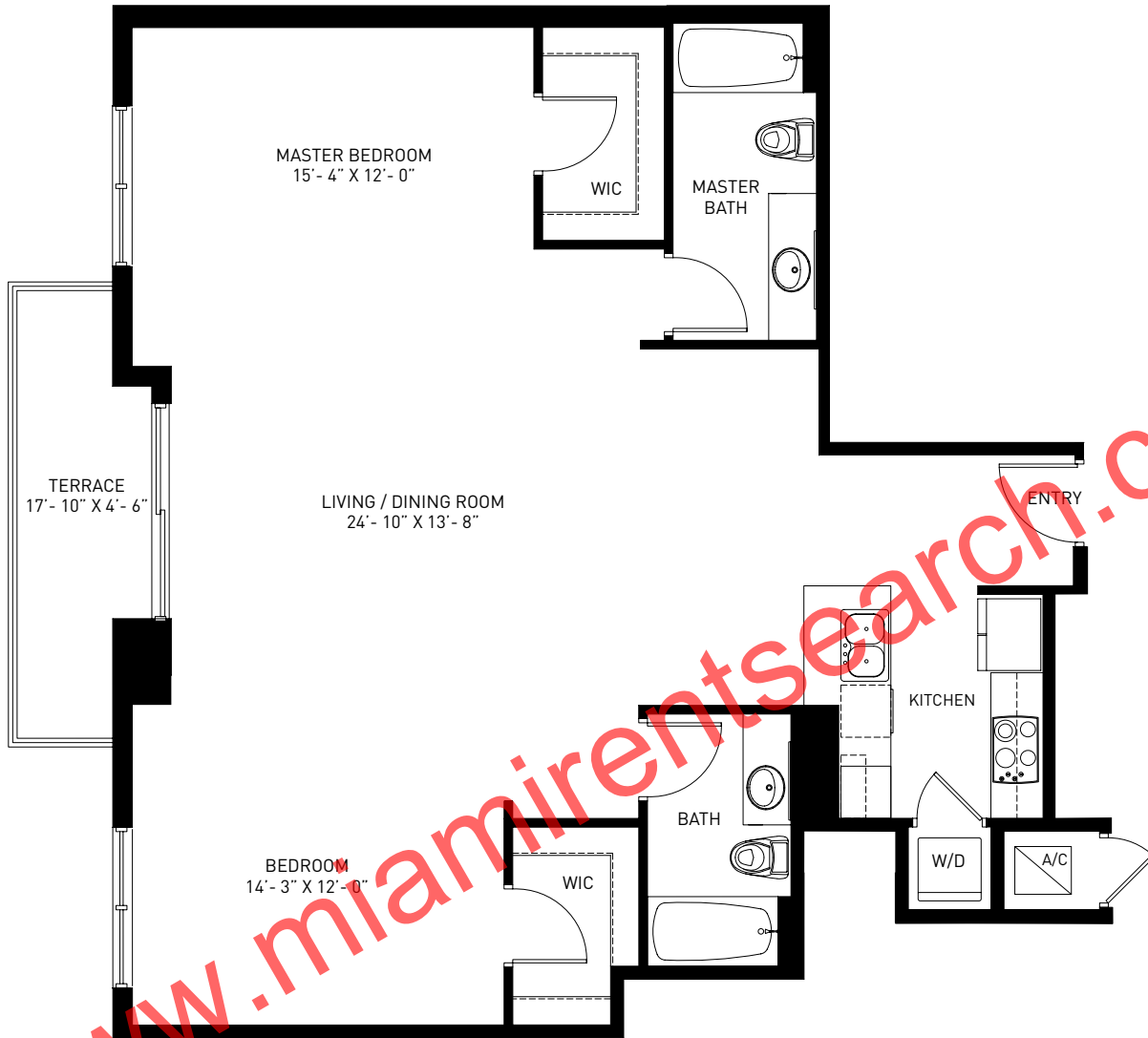
1 BEDROOM • 1.5 BATH • DEN • TERRACE

Unit Area:	946 sq ft	87.88 m <sup>2</sup>
Terrace:	73 sq ft	6.82 m <sup>2</sup>

**TOTAL AREA: 1019 sq ft 94.70 m<sup>2</sup>**



All dimensions are approximate and all floor plans and development plans are subject to change by the developer without notice. Stated dimensions are measured to the exterior boundaries of the exterior walls and the centerline of interior demising walls and in fact vary from the dimensions that would be determined by using the description and definition of the "Unit" set forth in the Declaration (which generally only includes the interior airspace between the perimeter walls and excludes interior structural components).



www.miamirentsearch.com

BISCAYNE BAY

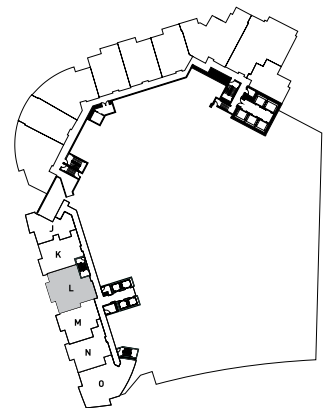
**LOFT L**

2 BEDROOM • 2 BATH • TERRACE

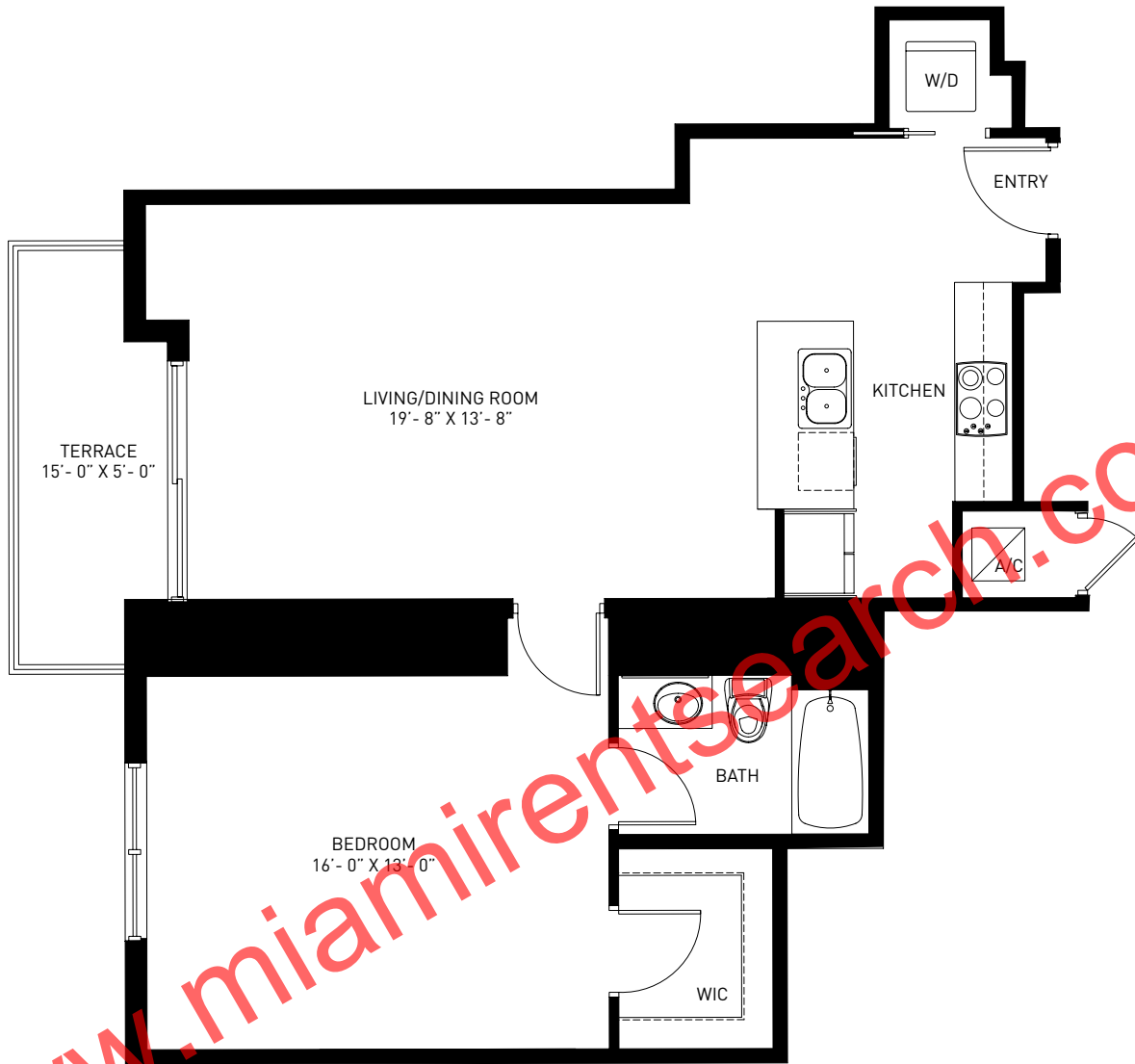
Unit Area: 1177 sq ft 109.34 m<sup>2</sup>

Terrace: 85 sq ft 7.86 m<sup>2</sup>

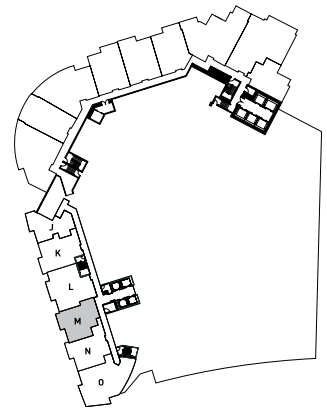
**TOTAL AREA: 1262 sq ft 117.20 m<sup>2</sup>**



All dimensions are approximate and all floor plans and development plans are subject to change by the developer without notice. Stated dimensions are measured to the exterior boundaries of the exterior walls and the centerline of interior demising walls and in fact vary from the dimensions that would be determined by using the description and definition of the "Unit" set forth in the Declaration (which generally only includes the interior airspace between the perimeter walls and excludes interior structural components).



BISCAYNE BAY



**LOFT M**

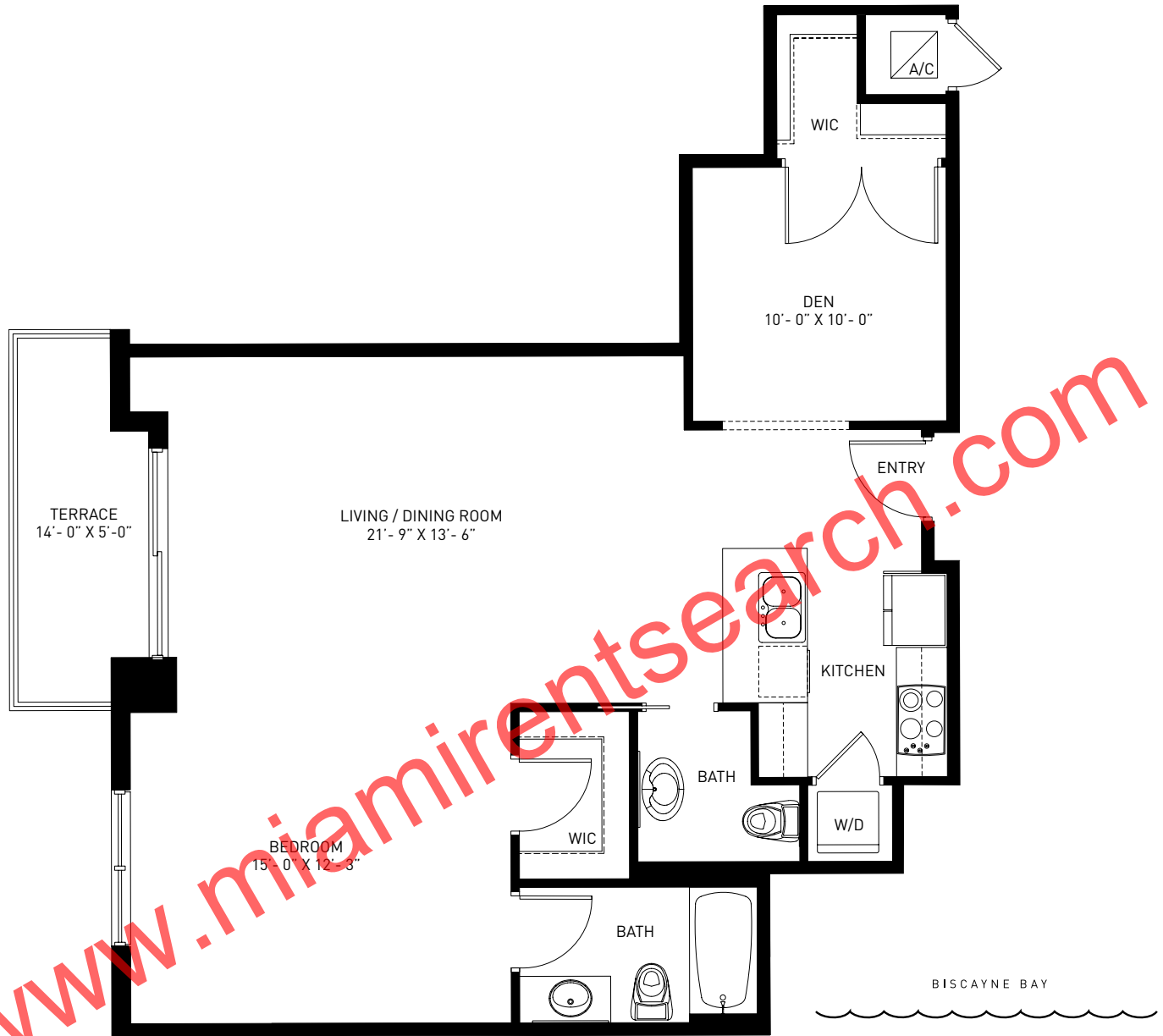
1 BEDROOM • 1 BATH • TERRACE

Unit Area: 861 sq ft 79.98 m<sup>2</sup>

Terrace: 74 sq ft 6.83 m<sup>2</sup>

**TOTAL AREA: 935 sq ft 86.81 m<sup>2</sup>**

All dimensions are approximate and all floor plans and development plans are subject to change by the developer without notice. Stated dimensions are measured to the exterior boundaries of the exterior walls and the centerline of interior demising walls and in fact vary from the dimensions that would be determined by using the description and definition of the "Unit" set forth in the Declaration (which generally only includes the interior airspace between the perimeter walls and excludes interior structural components).



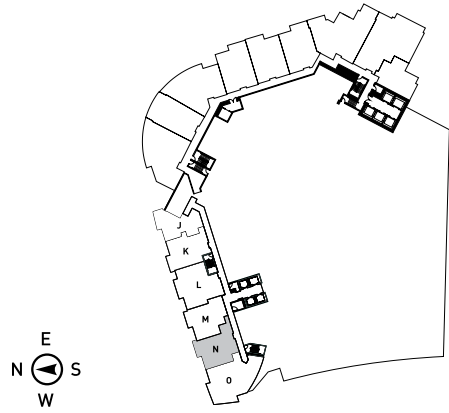
www.miamirentsearch.com

**LOFT N**

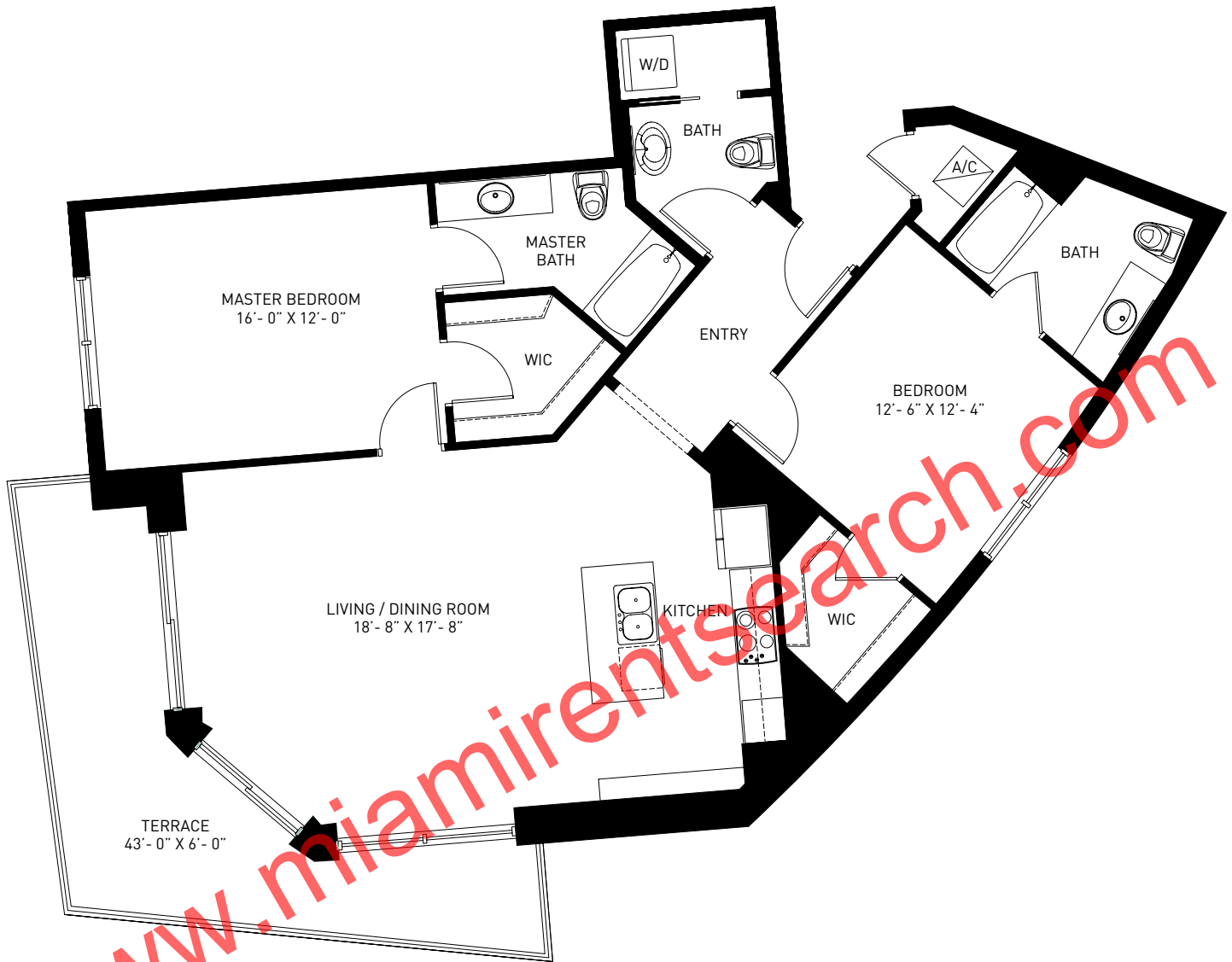
1 BEDROOM • 1.5 BATH • DEN • TERRACE

Unit Area:	946 sq ft	87.88 m <sup>2</sup>
Terrace:	73 sq ft	6.82 m <sup>2</sup>

**TOTAL AREA: 1019 sq ft 94.70 m<sup>2</sup>**



All dimensions are approximate and all floor plans and development plans are subject to change by the developer without notice. Stated dimensions are measured to the exterior boundaries of the exterior walls and the centerline of interior demising walls and in fact vary from the dimensions that would be determined by using the description and definition of the "Unit" set forth in the Declaration (which generally only includes the interior airspace between the perimeter walls and excludes interior structural components).



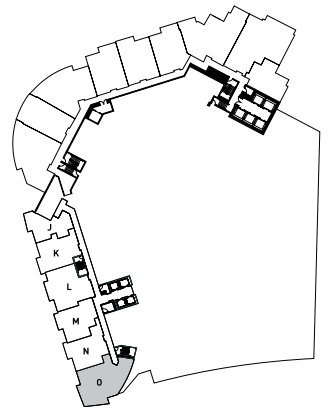
**LOFT 0**

2 BEDROOM • 2.5 BATH • TERRACE

Unit Area: 1295 sq ft 120.30 m<sup>2</sup>

Terrace: 214 sq ft 19.88 m<sup>2</sup>

**TOTAL AREA: 1509 sq ft 140.18 m<sup>2</sup>**



All dimensions are approximate and all floor plans and development plans are subject to change by the developer without notice. Stated dimensions are measured to the exterior boundaries of the exterior walls and the centerline of interior demising walls and in fact vary from the dimensions that would be determined by using the description and definition of the "Unit" set forth in the Declaration (which generally only includes the interior airspace between the perimeter walls and excludes interior structural components).